

EQUA ALL — ALL SAMPLE PREPARATIONS

Whether your sample is a liquid, solid or powder, **EQUA ALL** is designed to run your samples under optimized conditions.

EQUA ALL measurement methods automatically optimize all excitation parameters to measure elements from Sodium (Na) to Uranium (U) in 5 minutes.

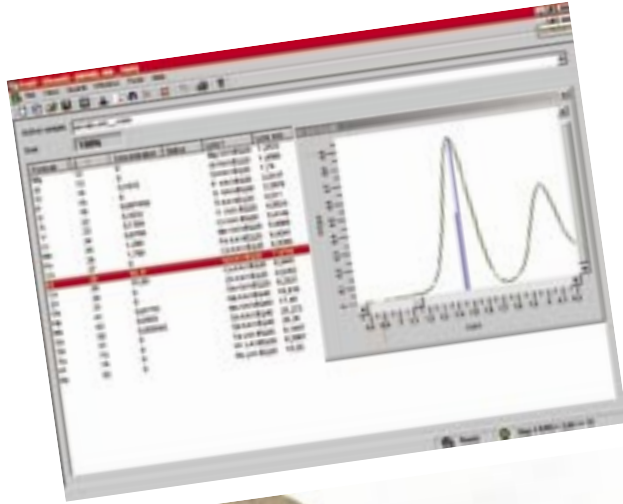




EQUA ALL calculates the element concentrations based on X-ray fluorescence (XRF) spectra.



EQUA ALL does more than just display these spectra: It automatically identifies all evaluated elements and marks all corresponding lines (Qualitative Analysis).



EQUA ALL uses the new Direct Correlation Algorithm to evaluate unknown samples.

EQUA ALL correlates the complete line set of an element directly with the concentration.

EQUA ALL integrates all line overlaps in the evaluation procedures without any user adjustments.

EQUA ALL handles all matrix effects using the successfully established variable α matrix correction.





EQUA ALL is totally integrated in the S2 RANGER touch screen software for easy operation.

EQUA ALL cooperates seamlessly with the software package SPECTRA EDX for the external PC using the interactive evaluation and all options of the extended reporting.

EQUA ALL supports the S2 Calibration Wizard for your own calibrations providing optimized measurement conditions.



EQUA ALL provides instant answers about your unknown samples – directly on the touch screen and on the integrated printer.

Analysis is easier than ever using **EQUA ALL** on your S2 RANGER. Everyone can get results. No special training is required.



BRUKER ADVANCED X-RAY SOLUTIONS



BRUKER AXS GMBH

Östliche Rheinbrückenstrasse 49
D-76187 Karlsruhe
Germany

Tel: (+49) (721) 595-28 88
Fax: (+49) (721) 595-45 87
E-mail: info@bruker-axs.de
www.bruker-axs.de

BRUKER AXS INC.

5465 East Cheryl Parkway
Madison, WI 53711
U.S.A.

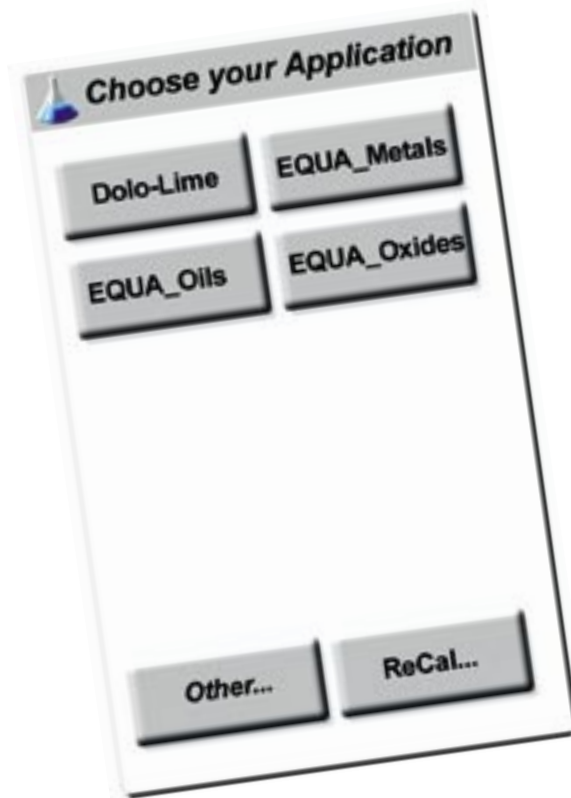
Tel: (+1) 800-234-XRAY
Tel: (+1) 608-276-3000
FAX: (+1) 608-276-3006
E-mail: info@bruker-axs.com
www.bruker-axs.com

BRUKER ADVANCED X-RAY SOLUTIONS



SPECTROMETRY SOLUTIONS
EQUA ALL for the S2 RANGER





EQUA ALL is the unique standardless solution that enables you to obtain results immediately – True "Touch 'n Analyze" from the first minute of your measurements.

EQUA ALL means:

ELEMENT QUANTIFICATION without performing a calibration for:

ALL Elements from Na – U

ALL Ranges from ppm – 100 %

ALL Materials (Metals, Oxides, Oils,...)

ALL Preparations (Pellets, beads, solids, liquids,...)